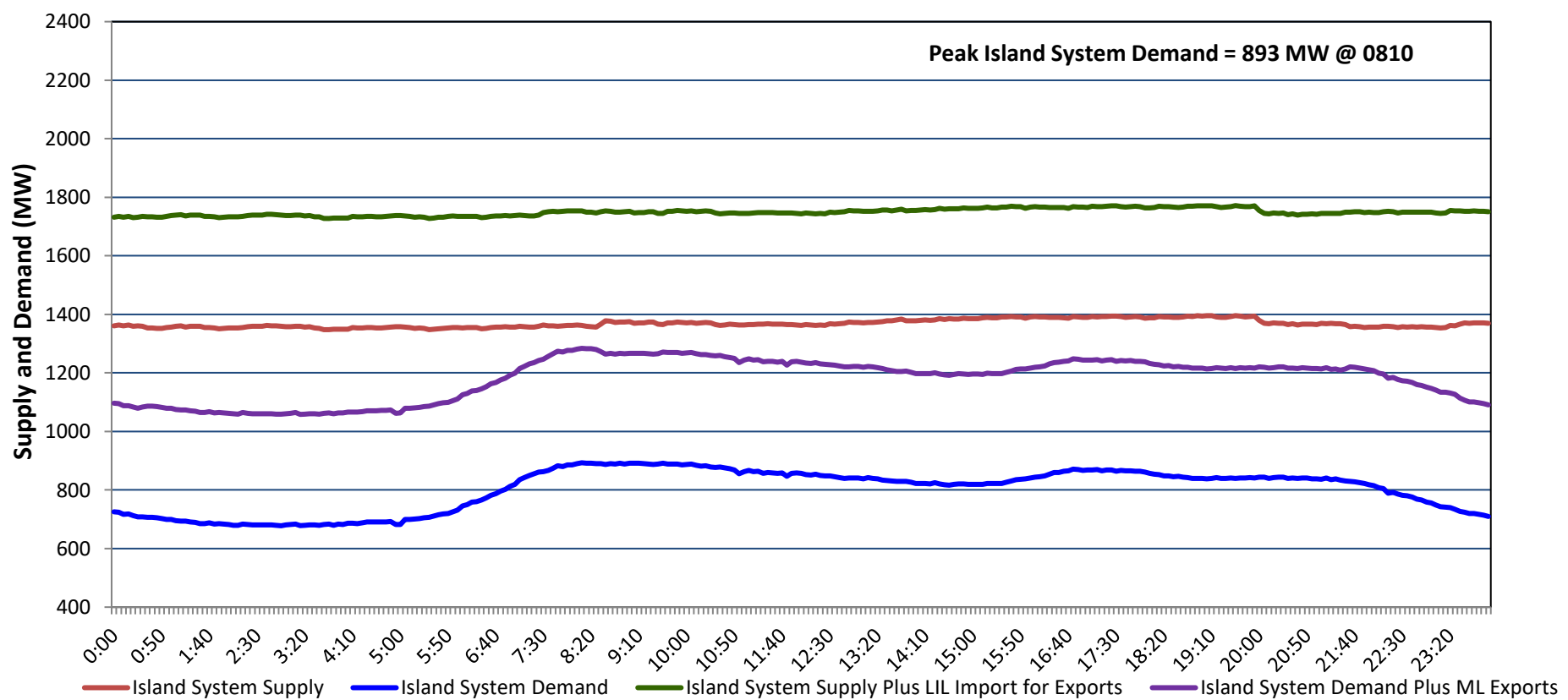


Newfoundland Labrador Hydro (NLH) Supply and Demand Status Report Filed Tuesday, June 04, 2024

Section 1 Island Interconnected System - Supply, Demand & Exports Actual 24 Hour System Performance For Monday, June 03, 2024



Island Supply Notes For June 03, 2024

- A As of 2059 hours, July 13, 2023, Stephenville Gas Turbine unavailable due to forced outage (50 MW).
- B As of 1400 hours, February 06, 2024, St. Anthony Diesel Plant available at 8.7 MW due to forced derating (9.7 MW).
- C As of 1011 hours, April 12, 2024, Holyrood Unit 1 unavailable due to planned outage (170 MW).
- D As of 1038 hours, May 20, 2024, Bay d'Espoir Unit 1 unavailable due to planned outage (76.5 MW).
- E As of 0700 hours, May 26, 2024, Holyrood Unit 3 unavailable due to planned outage (150 MW).
- F As of 0510 hours, May 27, 2024, Cat Arm Unit 1 available at 60 MW due to forced derating (67 MW).
- G As of 0859 hours, May 30, 2024, Holyrood Unit 2 available but not operating (170 MW).
- H As of 1255 hours, May 31, 2024, Labrador Island Link available at 450 MW due to forced derating (700 MW) - Bipole.
- I As of 0906 hours, June 02, 2024, Bay d'Espoir Unit 2 unavailable due to planned outage (76.5 MW).

Section 2 Island Interconnected System - Supply, Demand & Outlook

Tue, Jun 04, 2024	Island System Outlook ²	Seven-Day Forecast	Island System Daily Peak Demand (MW)	
			Forecast ⁸	Adjusted ⁶
Island System Supply: ⁴	1,363 MW	Tuesday, June 4, 2024	900	850
NLH Island Generation: ^{3,7}	990 MW	Wednesday, June 5, 2024	855	805
NLH Island Power Purchases: ⁵	130 MW	Thursday, June 6, 2024	850	800
NP and CBPP Owned Generation:	205 MW	Friday, June 7, 2024	860	810
LIL Net Imports to Island: ⁹	38 MW	Saturday, June 8, 2024	880	830
		Sunday, June 9, 2024	890	840
7-Day Island Peak Demand Forecast:	1,000 MW	Monday, June 10, 2024	1,000	950

Island Supply Notes For June 04, 2024

- Notes:
1. Generation outages for running and corrective maintenance are included. These are not unusual for power system operations. They generally do not impact customer supply. Hydro schedules outages to system equipment whenever possible to coincide with periods when customer demands are low and sufficient supply reserves are available. However, from time to time equipment outages are necessary and reserves may be impacted.
 2. As of 0800 Hours.
 3. Gross continuous unit output.
 4. Gross output from all Island sources (including Note 4).
 5. NLH Island Power Purchases include: ML Imports, Exploits Generation, Rattle Brook, Star Lake, Wind Generation and capacity assistance (when applicable).
 6. Adjusted for interruptible load and the impact of voltage reduction when applicable.
 7. Due to limitations inherent in the design of combustion turbines, the output of combustion turbines may be reduced in the event that ambient temperatures exceed the threshold required for full rated output. This threshold is dependent on the design of each turbine.
 8. Does not include ML Exports.
 9. LIL Import sunk in the Island System. Actual LIL flows will be restricted by various system conditions including, but not limited to, Island Load, ML Exports and Avalon Unit status.

Section 3 Island Peak Demand and Exports Information Previous Day Actual Peak and Current Day Forecast Peak

Mon, Jun 03, 2024	Island Peak Demand ¹⁰	8:10	893 MW
	Exports at Peak		391 MW
	LIL Net Imports to Island		1,067 MWh
Tue, Jun 04, 2024	Forecast Island Peak Demand		900 MW

- Notes: 10. Island Demand is supplied by NLH generation and purchases, LIL Imports plus generation owned and operated by Newfoundland Power and Corner Brook Pulp & Paper (Deer Lake Power, DLP).